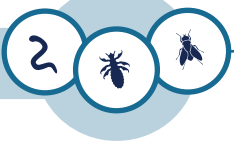




# Eprimectin™ Pour-On

(eprinomectin)

FDA-APPROVED BIOEQUIVALENT TO EPRINEX® (EPRINOMECTIN)



## **SAME BROAD-SPECTRUM PARASITE CONTROL**

Treats and controls 39 species and stages of internal and external parasites, matching the performance of Eprinex.



## **SAME ZERO MILK DISCARD + MEAT WITHDRAWAL**

All ages, all stages — use for calves,\* heifers, bulls, pregnant or open cows, with no meat or milk withhold.



## **SAME CONVENIENT WEATHERPROOF FORMULATION**

Rain or shine, Eprimectin remains effective regardless of what Mother Nature has in store.



SIZE	ITEM NO.
5 L	1EPR003
10 L	1EPR007

SCAN THE  
QR CODE  
TO LEARN  
MORE



Eprinex® is a registered trademark of Boehringer Ingelheim Animal Health.

\*Do not use in calves intended for veal or unapproved animal species, as severe adverse reactions, including fatalities in dogs, may result.

 **Bimeda®**

## UNMATCHED PARASITE CONTROL

INTERNAL PARASITE SPECIES	ADULT STAGE	L4 LARVAL STAGE
Brown stomach worm <i>Ostertagia ostertagi</i> (including inhibited)	✓	✓
Barber's pole worm <i>Haemonchus placei</i>	✓	✓
Black scour worm <i>Trichostrongylus colubriformis</i>	✓	✓
Threadneck intestinal worm <i>Nematodirus helvetianus</i>	✓	✓
Intestinal threadworm <i>Strongyloides papillosus</i>	✓	
Nodular worm <i>Oesophagostomum radiatum</i>	✓	✓
Whipworm <i>Trichuris spp.</i>	✓	
Lungworm <i>Dictyocaulus viviparus</i>	✓	✓
Small intestinal worm <i>Cooperia oncophora</i>	✓	✓
Small intestinal worm <i>Cooperia punctata</i>	✓	✓
Small intestinal worm <i>Cooperia surnabada</i>	✓	✓
Hairworm <i>Trichostrongylus axei</i>	✓	✓
Black scour worm <i>Trichostrongylus longispicularis</i>	✓	
Hookworm <i>Bunostomum phlebotomum</i>	✓	✓

### EXTERNAL PARASITE SPECIES

**Cattle Grubs (all parasitic stages)**  
*Hypoderma lineatum*, *Hypoderma bovis*

**Mange Mites**  
*Chorioptes bovis*, *Sarcoptes scabiei*

**Lice**  
*Damalinia bovis*, *Linognathus vituli*,  
*Haematopinus eurytetrus*, *Solenopotes capillatus*

**Horn Flies**  
*Haematobia irritans*

**FOR USE IN BEEF AND DAIRY CATTLE INCLUDING LACTATING DAIRY CATTLE**

**RECOMMENDED DOSE IS 1 ML / 22LBS BODY WEIGHT (10KG)**

**APPLY TOPICALLY ALONG THE BACKLINE FROM WITHERS TO TAILHEAD**

**IMPORTANT SAFETY INFORMATION:** NO MEAT OR MILK WITHDRAWAL IS REQUIRED WHEN USED ACCORDING TO LABEL. DO NOT USE IN CALVES INTENDED FOR VEAL OR UNAPPROVED ANIMAL SPECIES, AS SEVERE ADVERSE REACTIONS, INCLUDING FATALITIES IN DOGS, MAY RESULT.